



# pICln Polyclonal Antibody

<b>Catalog No</b>	YP-Ab-16495
<b>Isotype</b>	IgG
<b>Reactivity</b>	Human;Rat;Mouse;
<b>Applications</b>	WB;ELISA;IHC
<b>Gene Name</b>	CLNS1A
<b>Protein Name</b>	Methylosome subunit pICln
<b>Immunogen</b>	The antiserum was produced against synthesized peptide derived from human CLNS1A. AA range:184-233
<b>Specificity</b>	pICln Polyclonal Antibody detects endogenous levels of pICln protein.
<b>Formulation</b>	Liquid in PBS containing 50% glycerol, 0.5% BSA and 0.02% sodium azide.
<b>Source</b>	Polyclonal, Rabbit,IgG
<b>Purification</b>	The antibody was affinity-purified from rabbit antiserum by affinity-chromatography using epitope-specific immunogen.
<b>Dilution</b>	WB 1:500-2000;IHC-p 1:50-300; ELISA 2000-20000
<b>Concentration</b>	1 mg/ml
<b>Purity</b>	≥90%
<b>Storage Stability</b>	-20°C/1 year
<b>Synonyms</b>	CLNS1A; CLCI; ICLN; Methylosome subunit pICln; Chloride channel; nucleotide sensitive 1A; Chloride conductance regulatory protein ICLn; I(Cln); Chloride ion current inducer protein; CICI; Reticulocyte pICln
<b>Observed Band</b>	37kD
<b>Cell Pathway</b>	Cytoplasm, cytosol . Nucleus . Cytoplasm, cytoskeleton . A small fraction is also associated with the cytoskeleton (PubMed:18984161).
<b>Tissue Specificity</b>	Cervix carcinoma,Colon cancer,Colon carcinoma,Embryonic kid
<b>Function</b>	function:The interaction with Sm proteins inhibits their assembly on U RNA and interferes with snRNP biogenesis. Inhibits the binding of survival motor neuron protein (SMN) to Sm proteins. May participate in cellular volume control by activation of a swelling-induced chloride conductance pathway.,PTM:Phosphorylated upon DNA damage, probably by ATM or ATR.,similarity:Belongs to the pICln family.,subcellular location:A small fraction is also associated with the cytoskeleton.,subunit:Homooligomer. Component of the methylosome, a 20S complex containing SKB1. Interacts with Sm proteins.,
<b>Background</b>	This gene encodes a protein that functions in multiple regulatory pathways. The encoded protein complexes with numerous cytosolic proteins and performs diverse functions including regulation of small nuclear ribonucleoprotein biosynthesis, platelet activation and cytoskeletal organization. The protein is also



found associated with the plasma membrane where it functions as a chloride current regulator. Pseudogenes of this gene are found on chromosomes 1, 4 and 6. Several transcript variants encoding different isoforms have been found for this gene. [provided by RefSeq, Jul 2015],

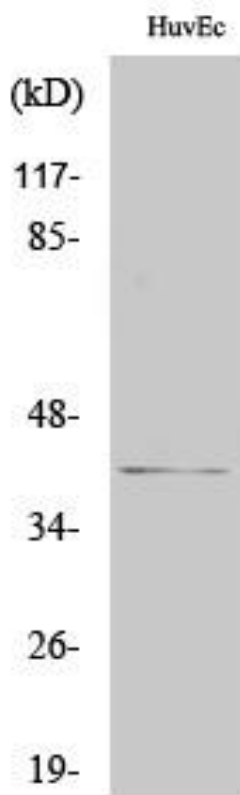
**matters needing attention**

Avoid repeated freezing and thawing!

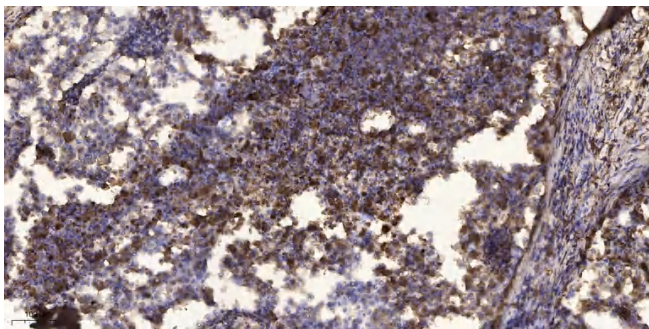
**Usage suggestions**

This product can be used in immunological reaction related experiments. For more information, please consult technical personnel.

**Products Images**



Western Blot analysis of various cells using pICln Polyclonal Antibody



Immunohistochemical analysis of paraffin-embedded human Squamous cell carcinoma of lung. 1, Antibody was diluted at 1:200(4° overnight). 2, Tris-EDTA,pH9.0 was used for antigen retrieval. 3,Secondary antibody was diluted at 1:200(room temperature, 45min).